

5353 N. FEDERAL HIGHWAY
FORT LAUDERDALE

Visibility . Access



LEASED BY:  **BLANCA**
Licensed Real Estate Broker

CHRISTIE CHAMBERS | christie.chambers@blancacre.com | 305.615.1866

OWNED &
MANAGED BY:  **ShareMD**



Medical and professional work environment.

5353 N. Federal Highway, Fort Lauderdale is a premier medical and professional office building strategically located in the heart of Fort Lauderdale's highly accessible commercial corridor. Owned and operated by SharedMD, this modern facility offers a superior setting for healthcare providers and business professionals alike.

This well-maintained, multi-tenant building features:

- Flexible medical and office suites
- Ample on-site parking for patients and staff
- On-grade accessible entrances
- Updated common areas and professional finishes
- Prominent visibility along North Federal Highway (U.S. 1)
- Close proximity to Holy Cross Health (4 minutes)
- Experience Medical Office ownership group
- Building signage opportunity

Facts

Address:	5353 N. Federal Highway, Fort Lauderdale, FL 33308
Use:	Medical and Professional Spaces
RBA:	28,177 SF
Parking:	4.0 / 1,000
Area:	<ul style="list-style-type: none">• Just minutes away Holy Cross and Imperial Point Hospitals• 85 WalkScore - Very Walkable• Close access to I-95• Traffic count on NE 50th Street & NE 22nd Avenue 39,973 Vehicles Per Hour

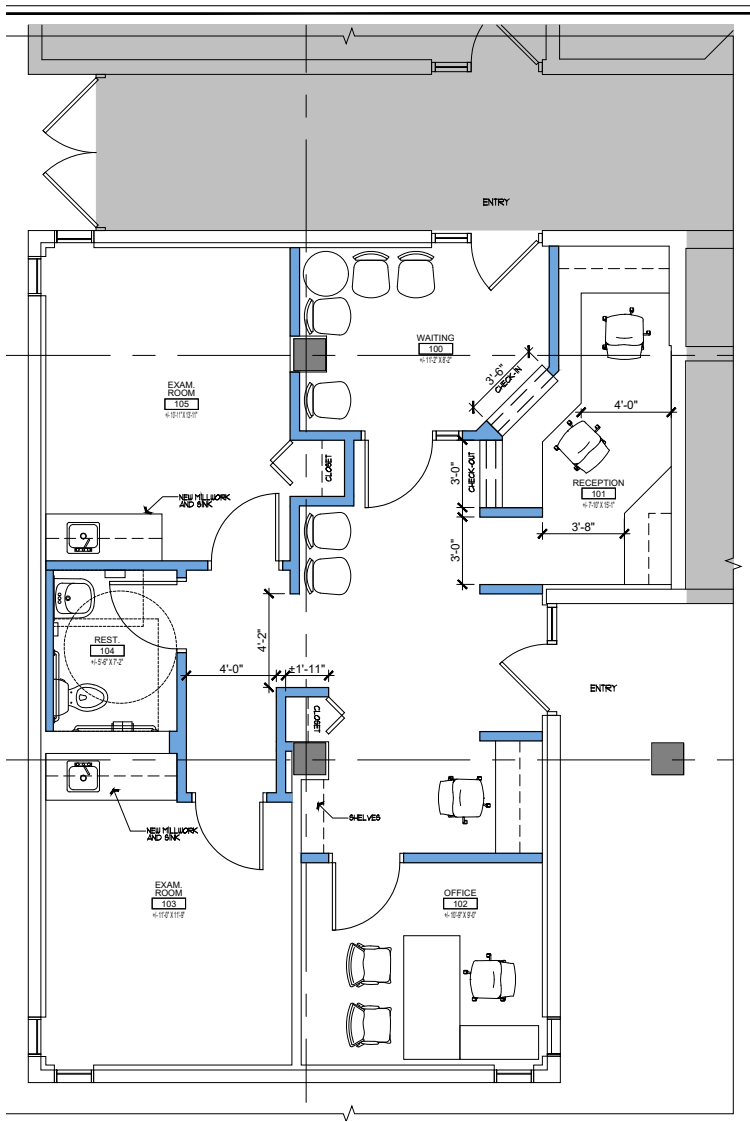
Suite 100

1,125 RSF

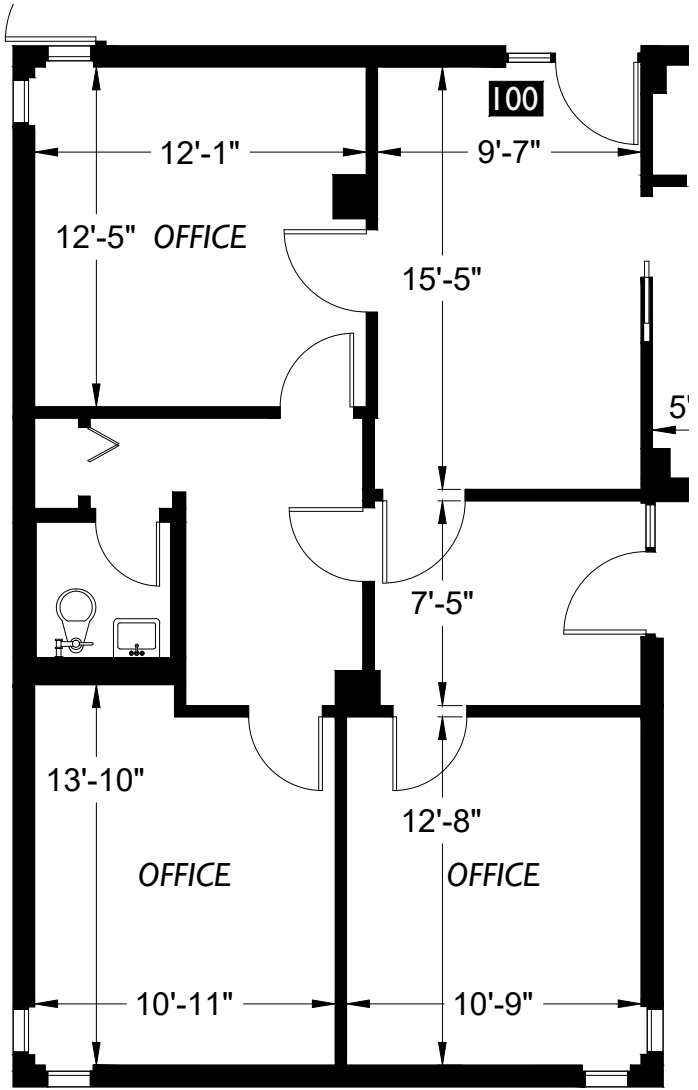


[Click Here For Virtual Tour](#)

Medical Office Test Fit



Current Floor Plan



Suite 204

1,034 RSF

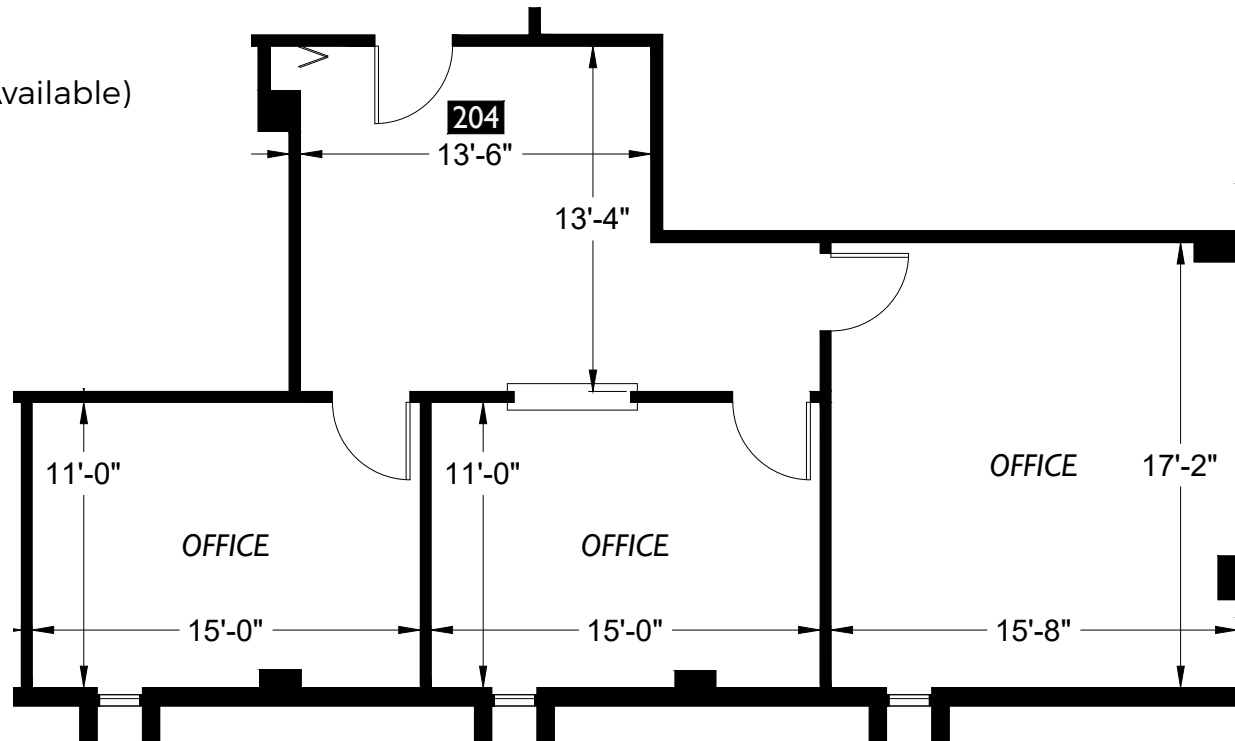


[Click Here For Virtual Tour](#)



Current Floor Plan

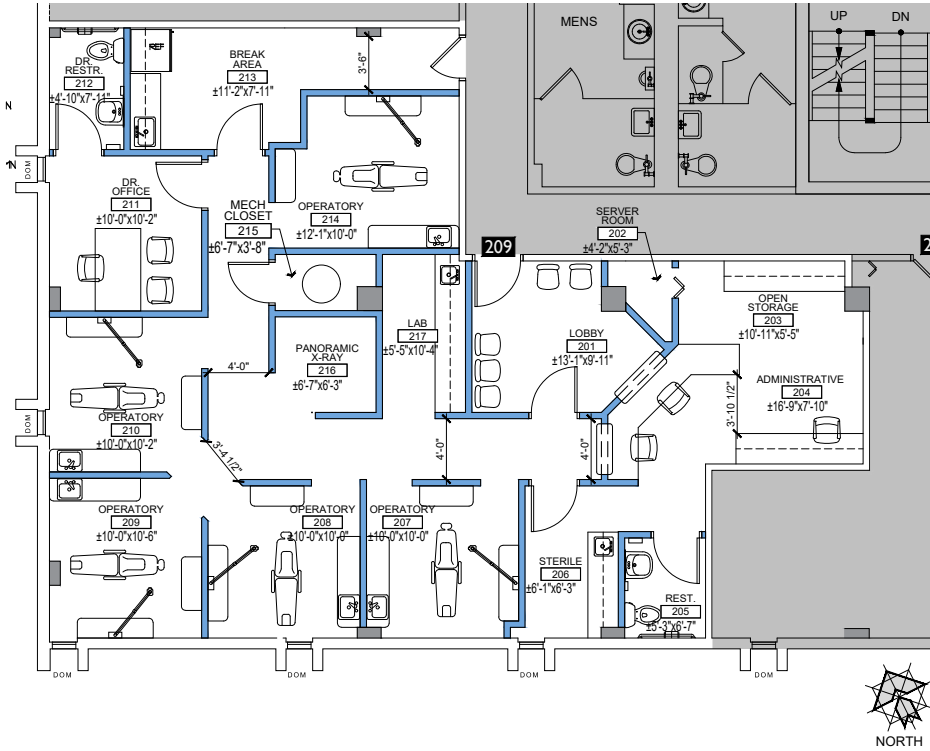
(Medical Office Test Fit Available)



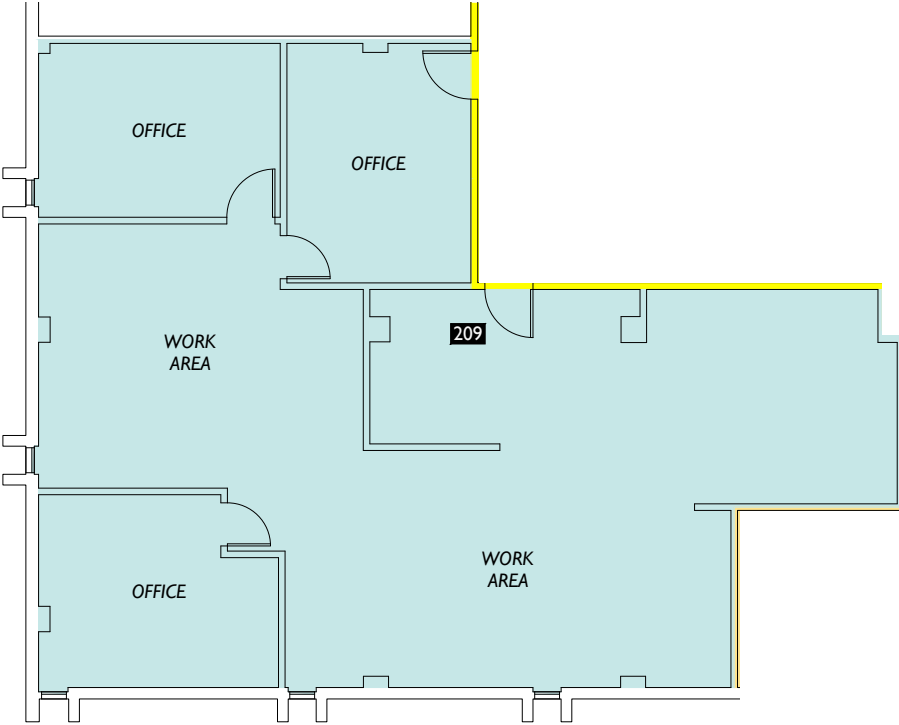
Suite 209

1,959 RSF

Medical Office Test Fit



Current Floor Plan

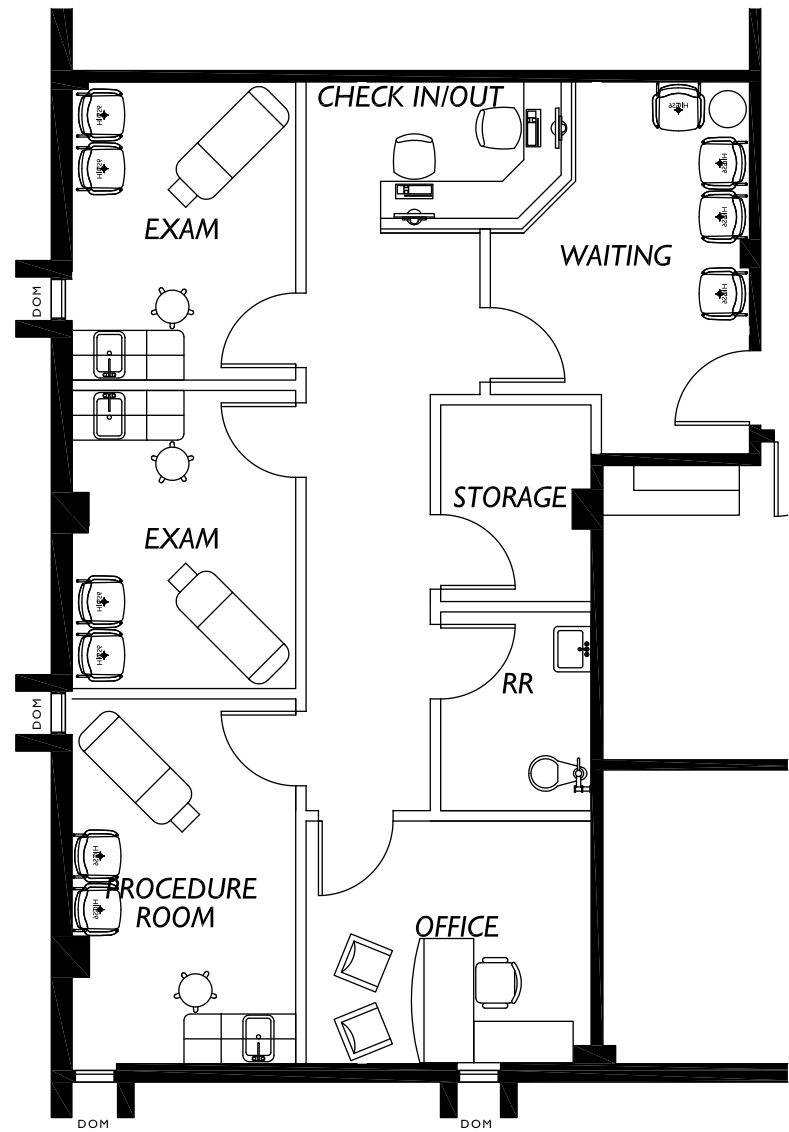


Suite 306

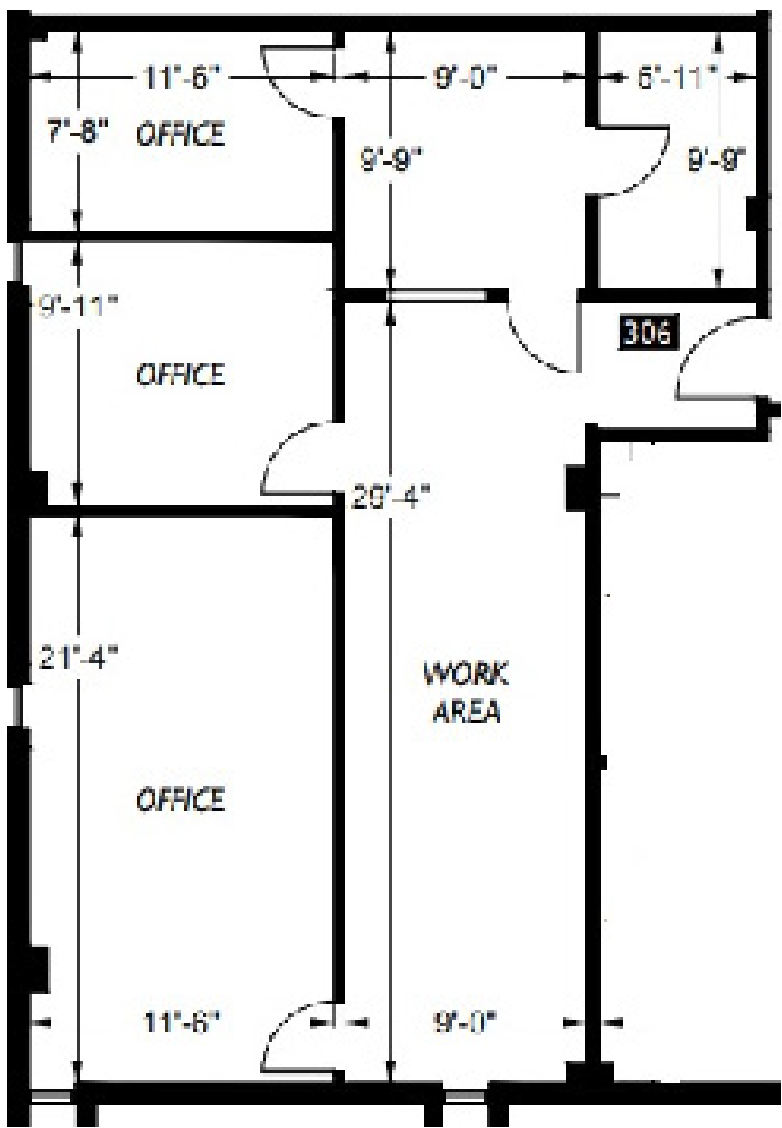
900 RSF

 [Click Here For Virtual Tour](#)

Medical Office Test Fit



Current Floor Plan



Suite 402

1,357 RSF



[Click Here For Virtual Tour](#)



5353 N. FEDERAL HIGHWAY, FORT LAUDERDALE

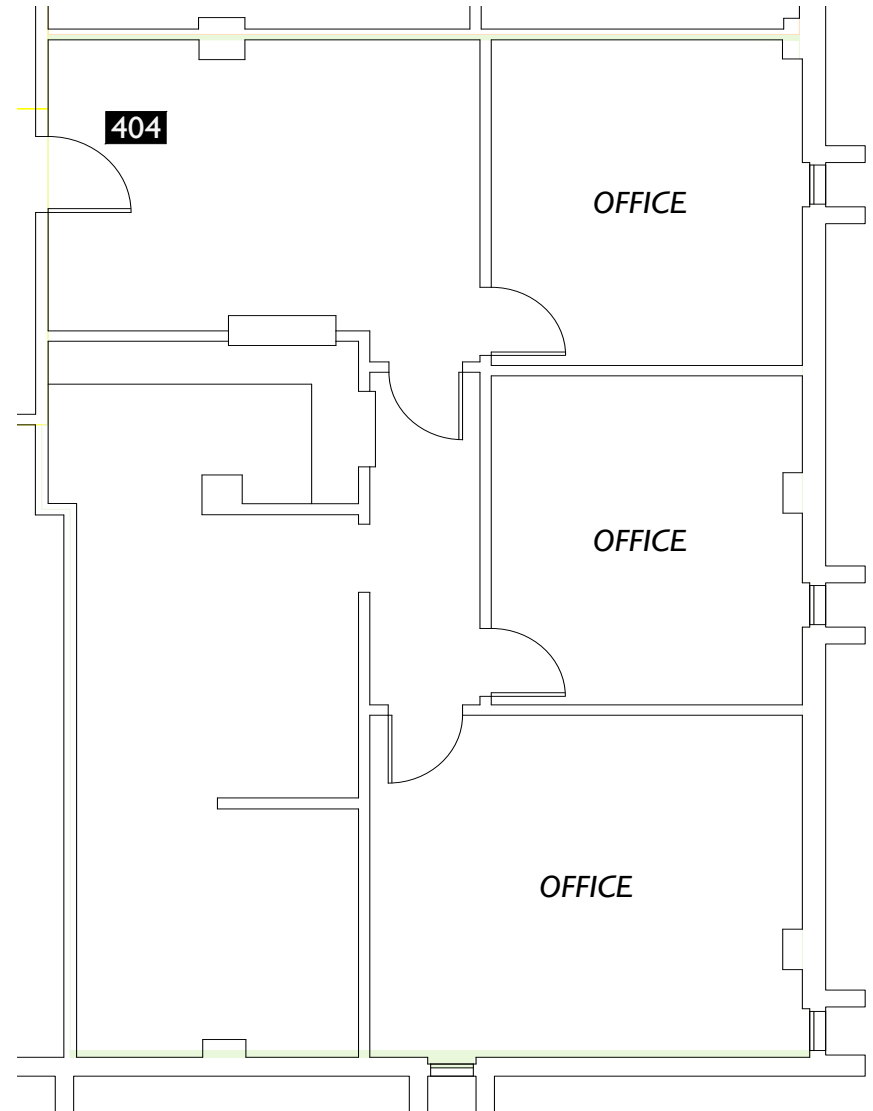
blancacre.com

Suite 404

1,315 RSF



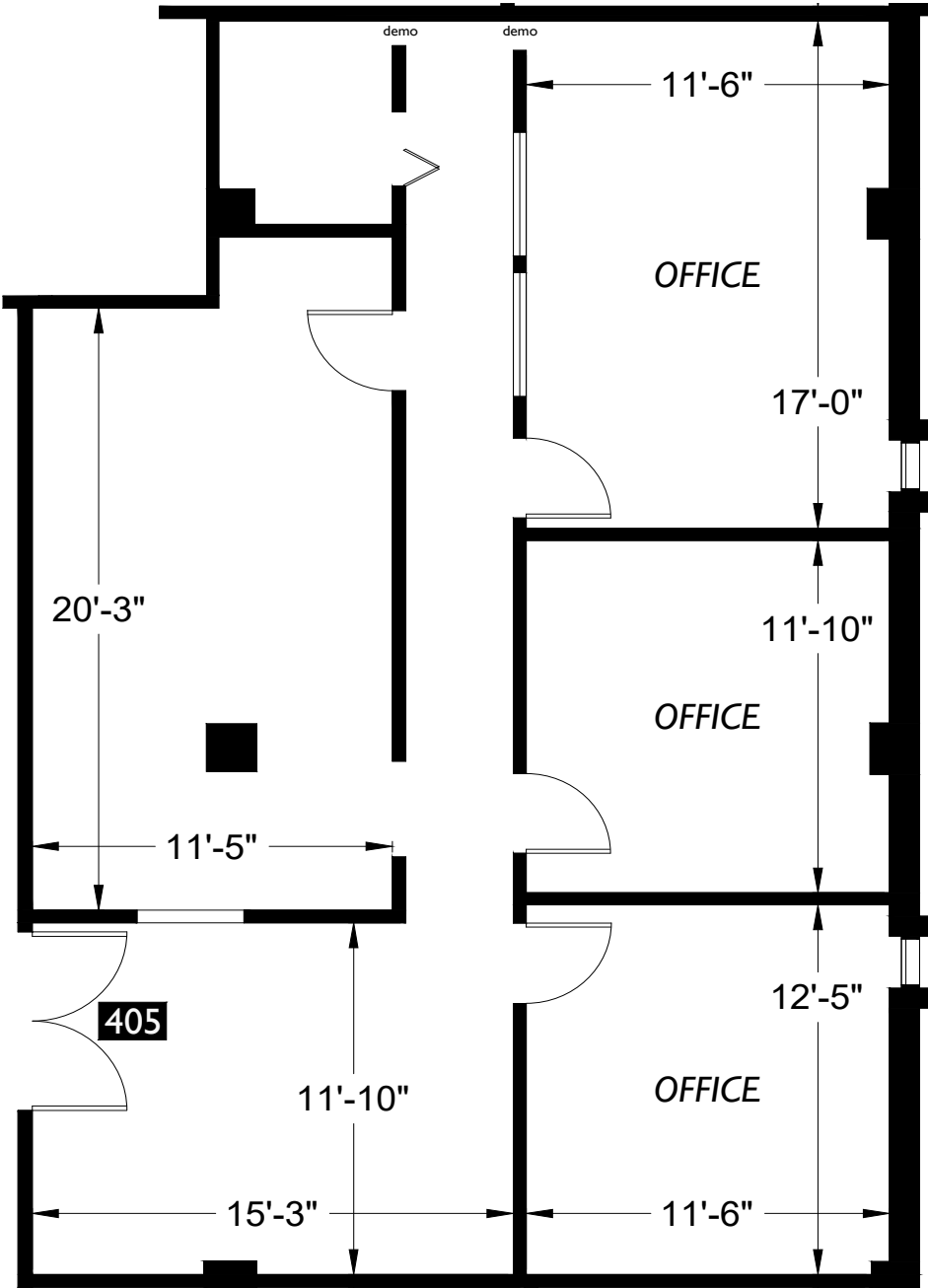
[Click Here For Virtual Tour](#)



Suite 405
1,749RSF



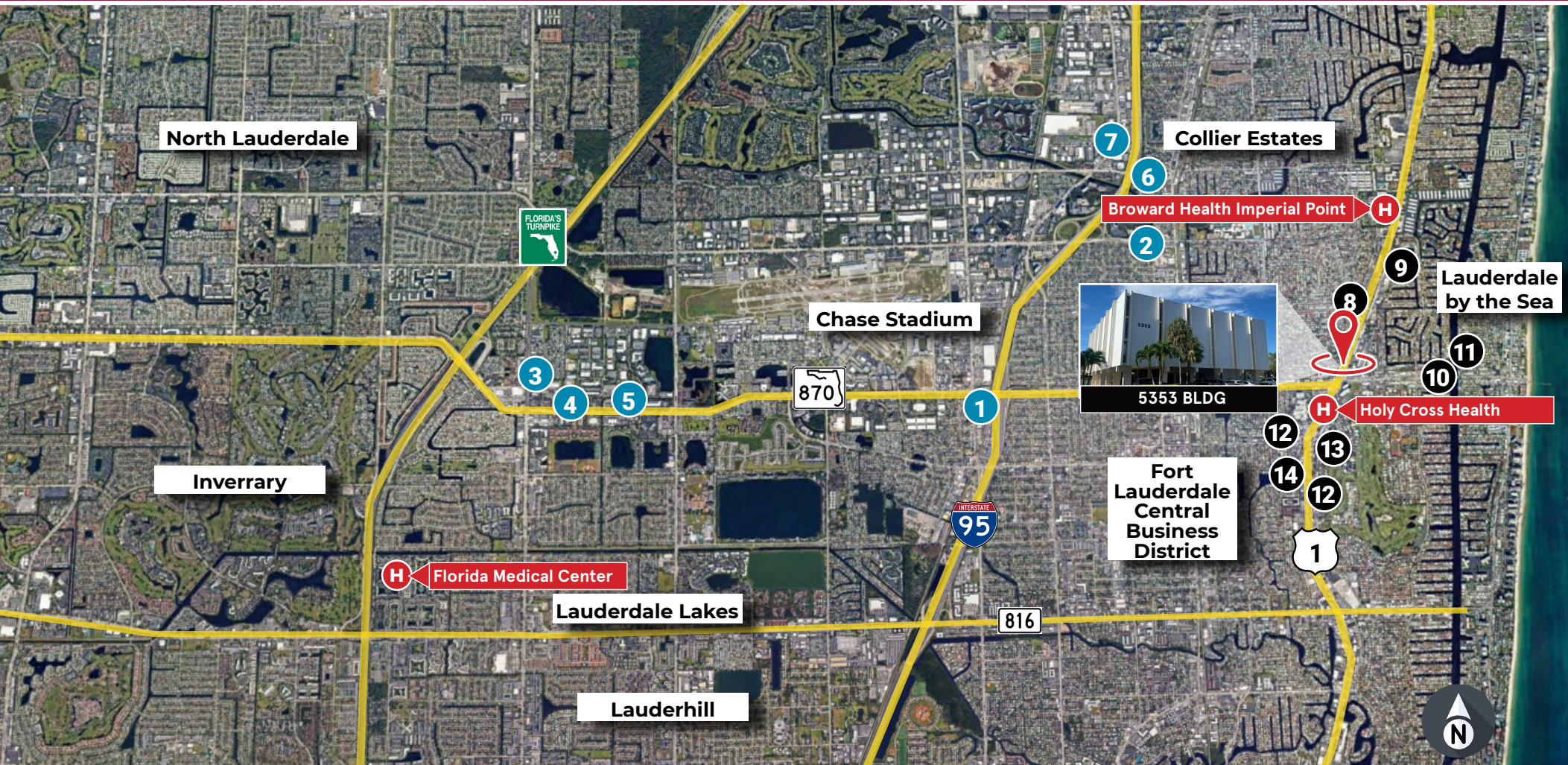
[Click Here For Virtual Tour](#)



Strategic access and visibility.

5353 N. Federal Highway, Fort Lauderdale

Perfectly positioned between Holy Cross Hospital and Imperial Point Hospital just off Federal Highway, 5353 BLDG offers convenience and visibility.



DRIVE TIMES TO CLOSET LOCATIONS

Airport: 20 Minutes
Hospital: 3 Minutes
Hotel: 10 Minutes
Highway: 15 Minutes

HOSPITALS

Holy Cross Health
Broward Health Imperial Point
Florida Medical Center

HOTELS

1. Fort Lauderdale Grand Hotel
2. Hampton Inn Fort Lauderdale
3. Plaza Hotel Fort Lauderdale
4. Extended Stay America Fort Lauderdale
5. Fort Lauderdale Marriot North
6. Westin Hotel Fort Lauderdale
7. Fort Lauderdale Marriot North

RESTAURANTS

8. Casa Frida Mexican Cuisine
9. Olive Garden
10. Klauz Restaurant
11. Blue Moon Fish Co
12. Mom's Kitchen
13. Ferdo's Grill Middle Eastern
14. La Bamba Mexican
15. Eatapas

5353 N. FEDERAL HIGHWAY, FORT LAUDERDALE

blancacre.com

For Leasing Information

CONTACT:

CHRISTIE CHAMBERS

christie.chambers@blancacre.com
305.615.1866



blancacre.com
1450 Brickell, Suite 2400
Miami, FL 33133

OWNED & MANAGED BY:



Disclaimer: Blanca Commercial Real Estate is a Licensed Real Estate Broker. No warranty of representation, expressed or implied, is made as to the accuracy of the information contained herein, and same is submitted subject to errors, omissions, change of price rental or other conditions, withdrawal without notice, and to any special conditions imposed by our clients.