



SUITE
905

EXCLUSIVE OFFICE ENVIRONMENT

OFFICE SPACE FOR LEASE IN OFIZZINA
1200 Ponce de Leon Blvd. Coral Gables

BUILDING FEATURES



OFIZZINA, located at 1200 Ponce de Leon Blvd., is an award-winning office building located in the heart of Coral Gables' business district. This Class A, office building features impact glass, ample parking, a lavish lobby with concierge service and high-end amenities. Tenants enjoy access to the building's state-of-the-art fitness center equipped with Peleton bikes, locker rooms and showers. Two private rooftop terraces are well suited for outdoor gatherings. The location makes ideal for accessing Miami's top neighborhoods.

STATE-OF-THE-ART FITNESS CENTER



ROOFTOP TERRACE



NEWLY DEVELOPED



SUITE FEATURES

VIDEO TOUR 

Suite For Lease:	905
Lease Rate:	\$47.00 PSF + Electric
Suite Size:	1,600 RSF
Parking Spaces:	4 Spaces \$120 PSPM plus applicable tax
Year Built:	2018
Layout:	1 Window-lined Office Conference Room Open Area for Workstations Kitchen Reception Area

Suite 905 boasts a modern window-lined office space with high ceilings, which provide abundant natural light. The suite offers spectacular views of Coral Gables, Brickell and Downtown Miami.

ABUNDANT NATURAL LIGHT



HIGH-END FINISHES



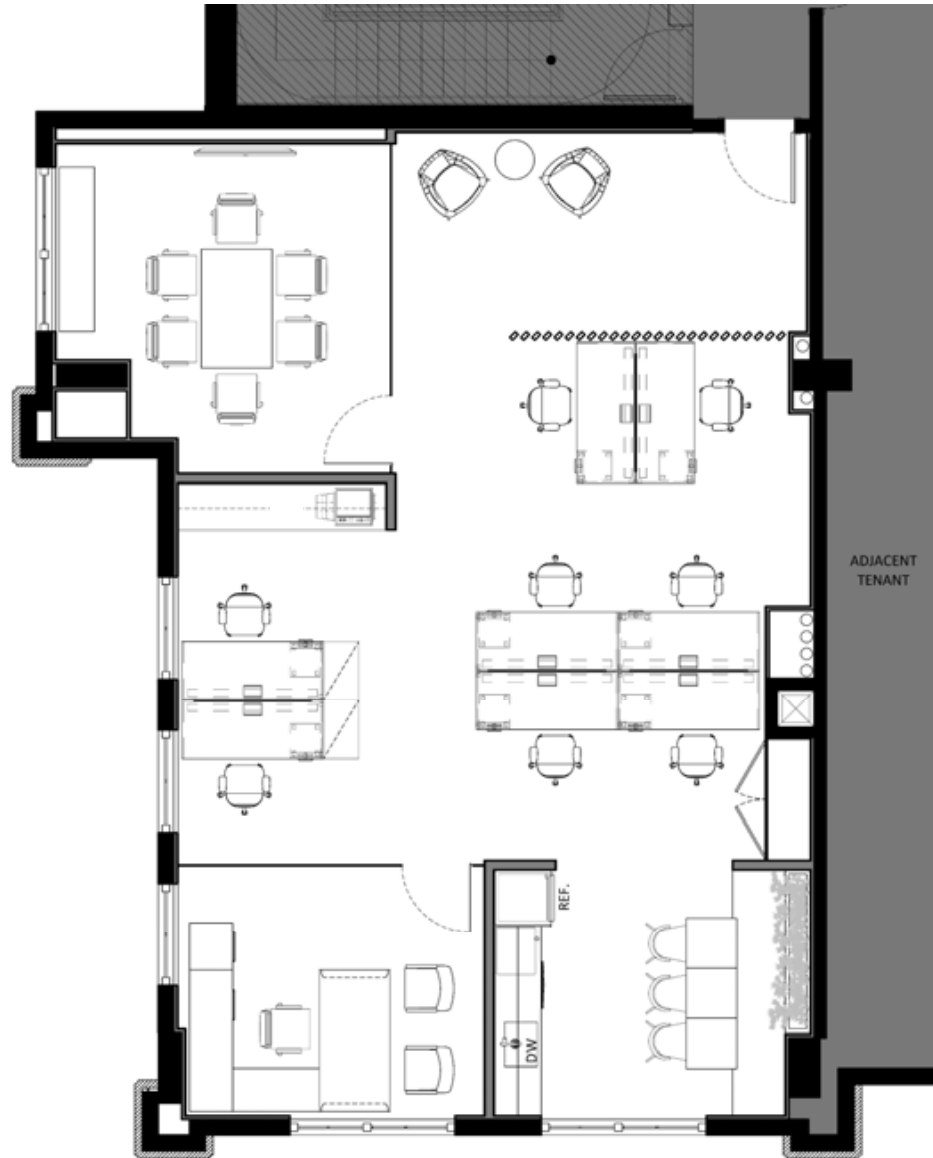
PHOTOS

VIDEO TOUR

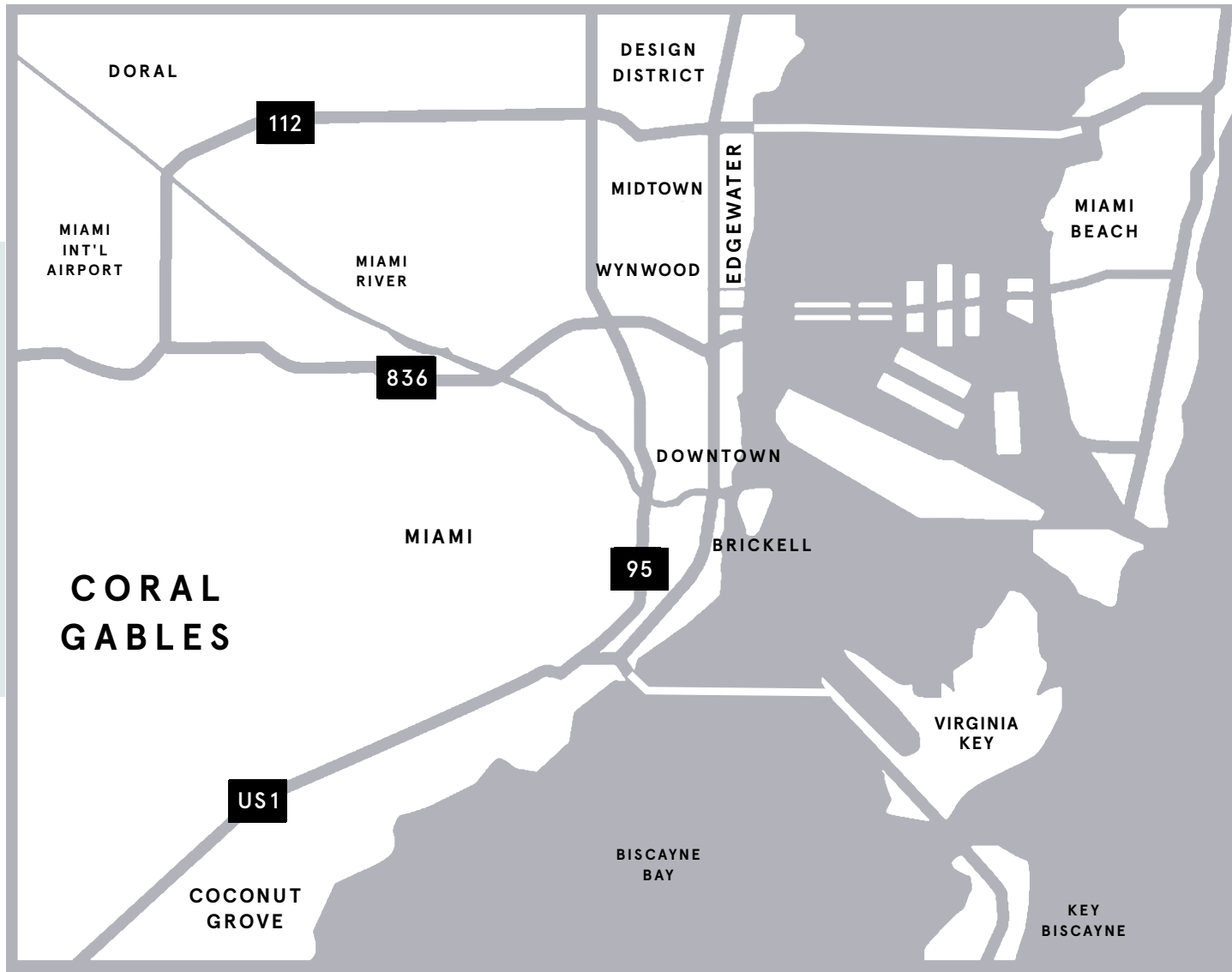


FLOOR PLAN

VIDEO TOUR 



ACCESS MAP



DRIVE TIMES:

Coconut Grove	10 Minutes
Miami Int'l Airport	14 Minutes
Brickell	15 Minutes
Downtown Miami	16 Minutes
Midtown	19 Minutes
Design District	20 Minutes
Wynwood	21 Minutes
Miami Beach	24 Minutes

LEASING INFORMATION

JUAN RUIZ
305.577.0251
juan.ruiz@blancacre.com



Licensed Real Estate Broker

BLANCA COMMERCIAL REAL ESTATE
1450 Brickell Avenue, Suite 2060, Miami, FL 33131

No warranty of representation, expressed or implied, is made as to the accuracy of the information contained herein, and same is submitted subject to errors, omissions, change of price rental or other conditions, withdrawal without notice, and to any special conditions imposed by our clients.