

SUBLEASE

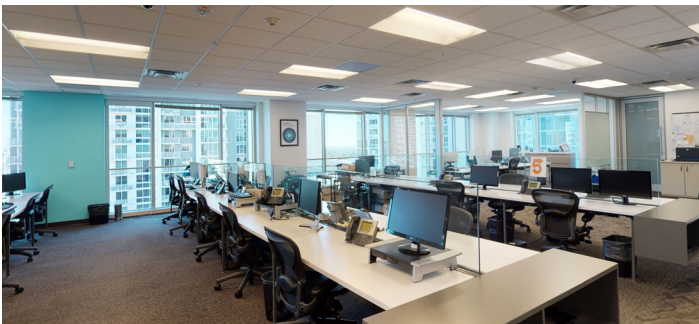
200 E LAS OLAS BOULEVARD

FORT LAUDERDALE, FL 33301

BLANCA COMMERCIAL REAL ESTATE | LICENSED REAL ESTATE BROKER

INTERIOR IMAGES | SUITE 1700

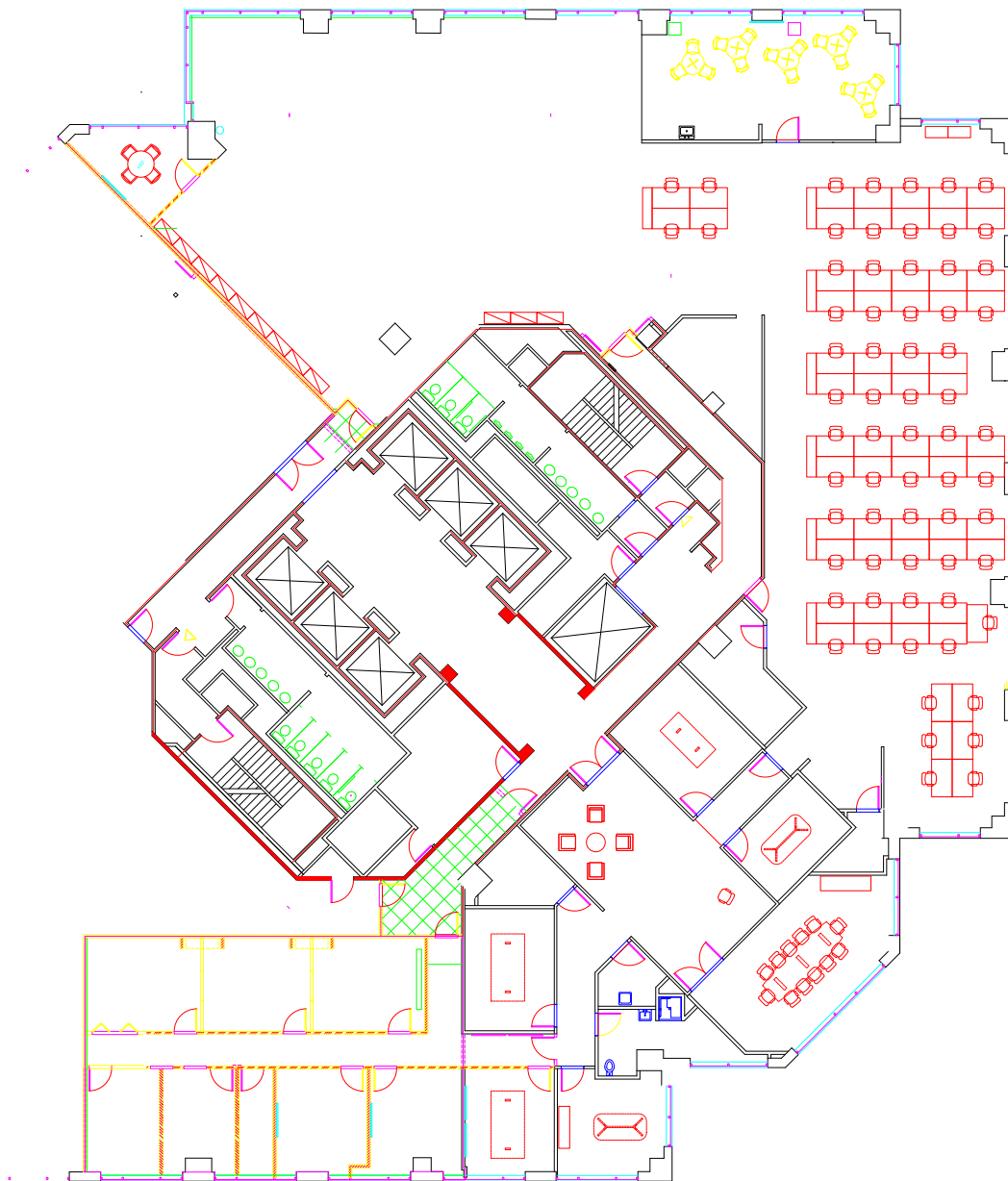
 VIRTUAL TOUR



FLOOR PLAN (AS BUILT) | SUITE 1700

 VIRTUAL TOUR

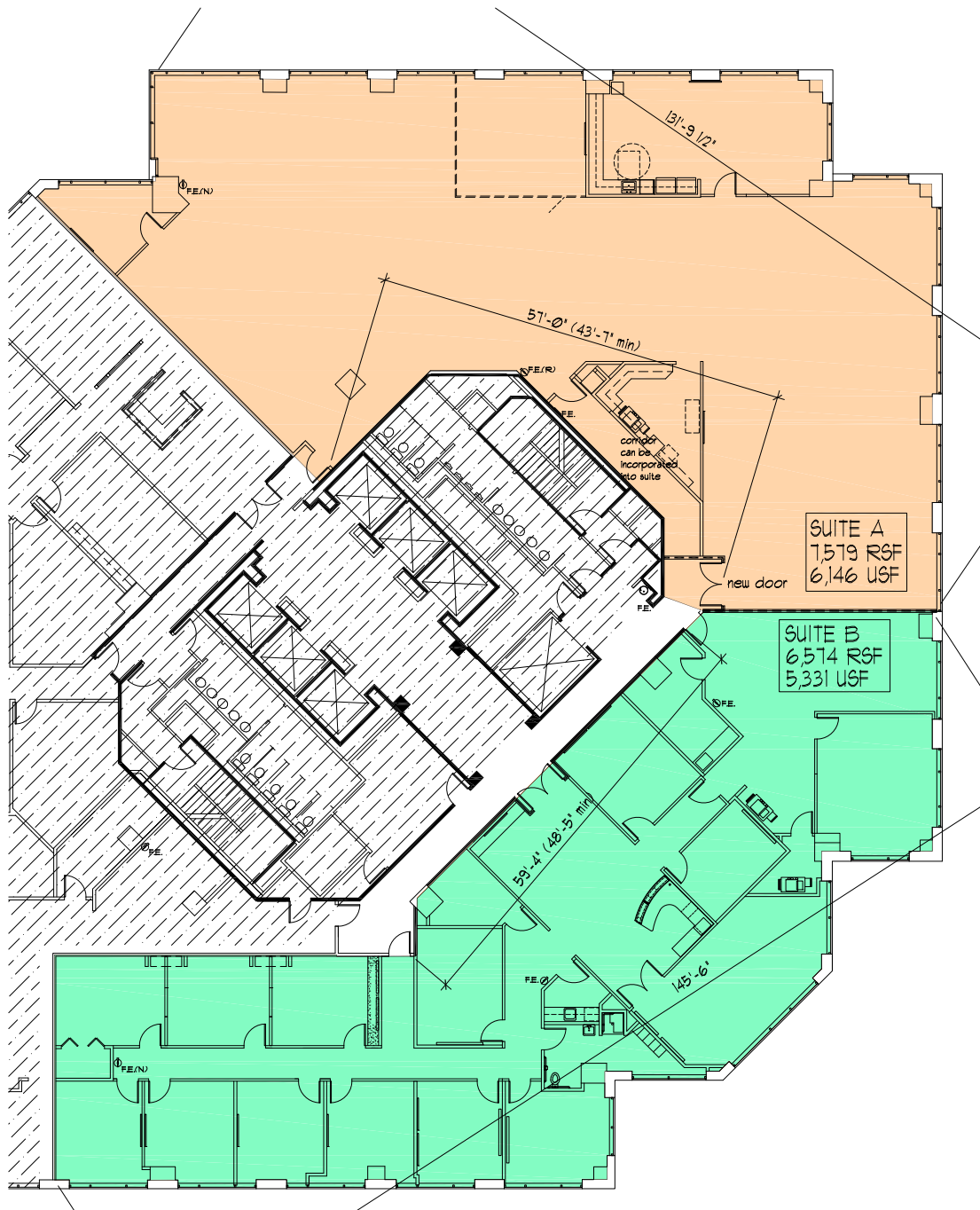
AVAILABLE SF	3,360 SF - 14,153 SF	TOTAL RBA	287,043
RATE	NEGOTIABLE	YEAR BUILT	1990
FURNITURE	NEGOTIABLE	CLASS	A
TERM EXPIRATION	11/30/2025	PARKING RATIO	2.35/ 1,000 SF
		FEATURES	LEED Gold



DIVISIBLE FLOOR PLAN | SUITE 1700 | 3,360 SF - 14,153 SF



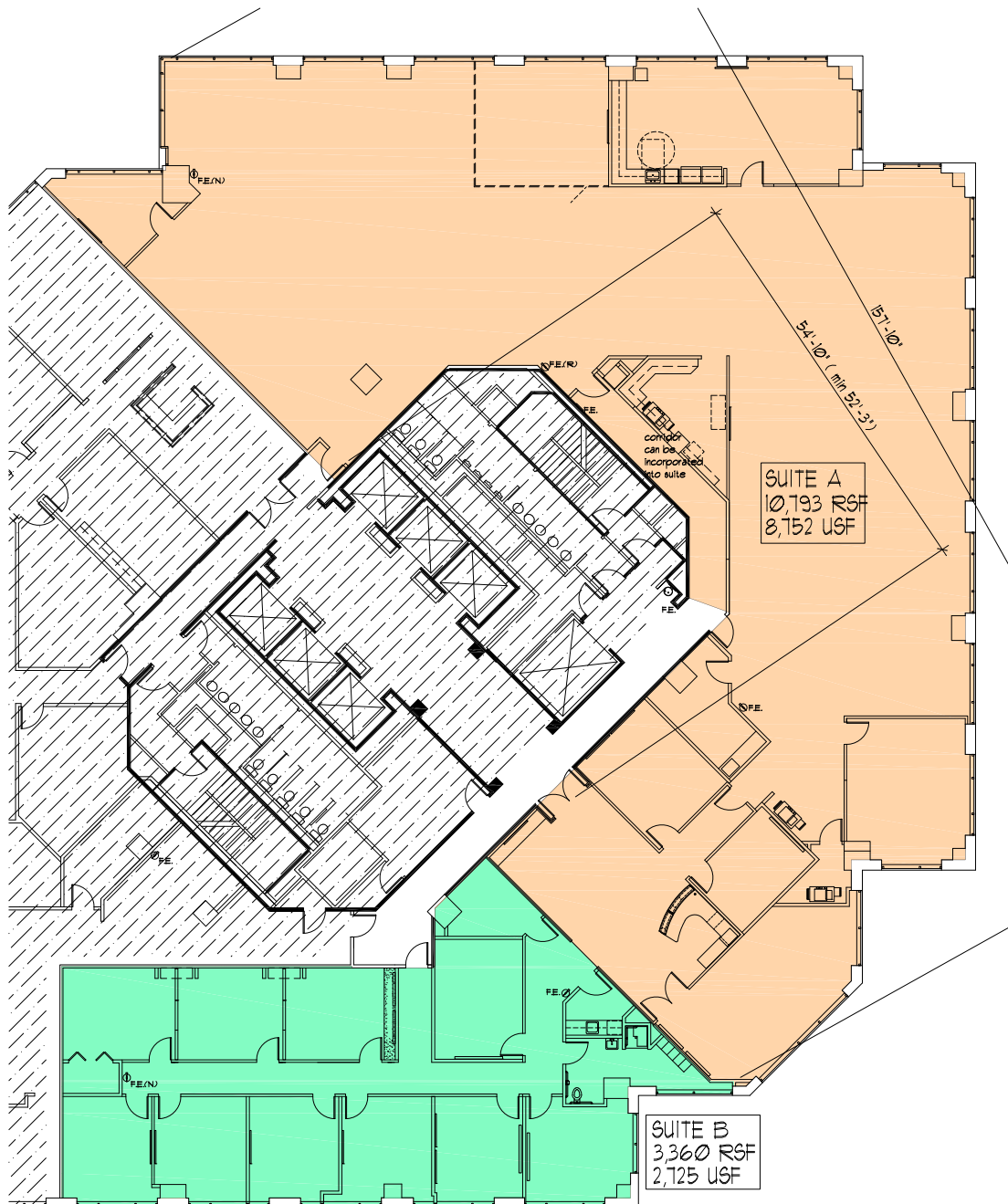
OPTION ONE



DIVISIBLE FLOOR PLAN | SUITE 1700 | 3,360 SF - 14,153 SF



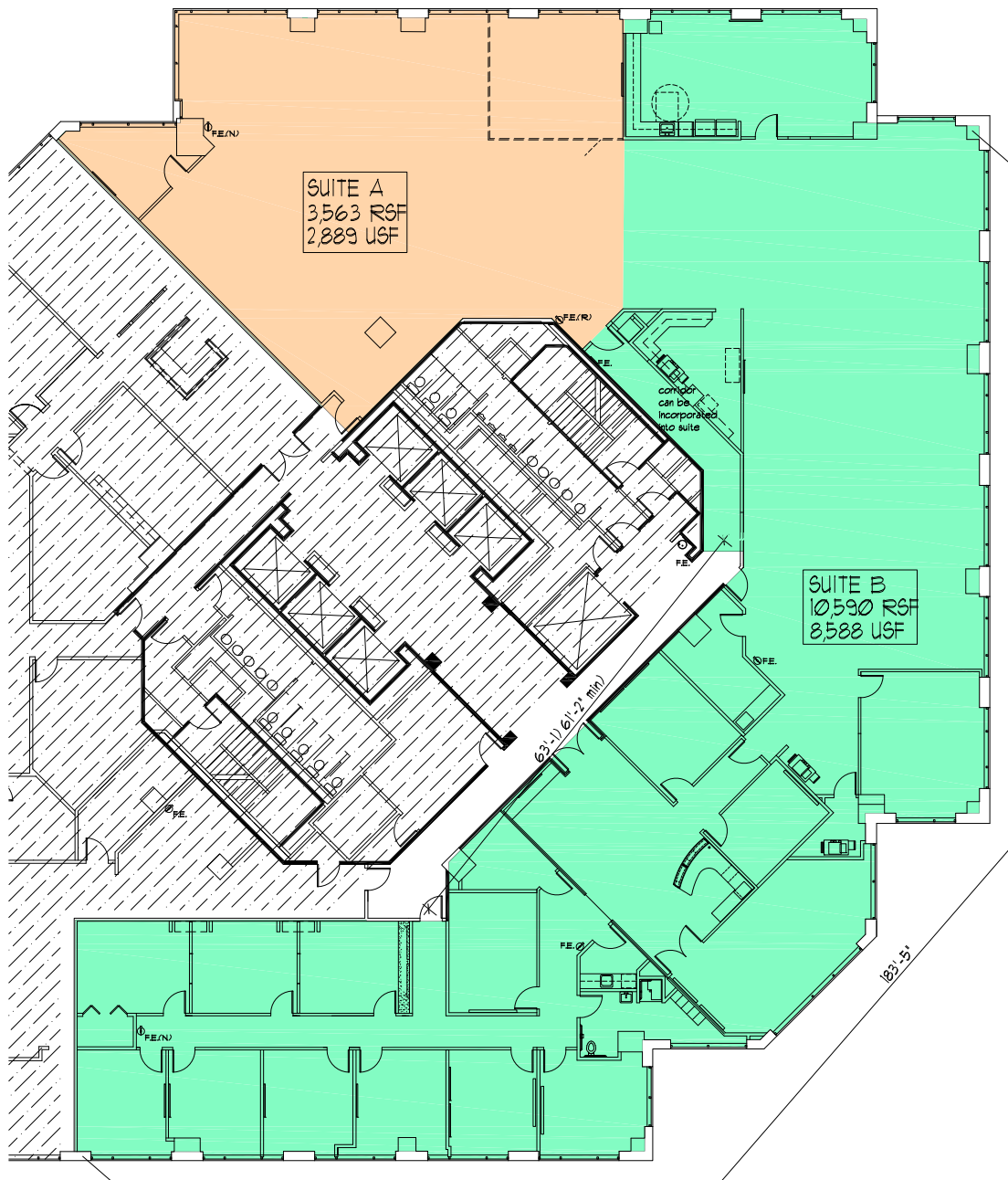
OPTION TWO



DIVISIBLE FLOOR PLAN | SUITE 1700 | 3,360 SF - 14,153 SF



OPTION THREE





FT. LAUDERDALE BRIGHTLINE STATION 🚶 7 min.

FT. LAUDERDALE-HOLLYWOOD INTERNATIONAL AIRPORT 🚗 12 min.

LOCATION HIGHLIGHTS

- Nearby access to I-95 via Broward and Davie Boulevard
- Immediate access to S. Federal Highway
- Within walking distance to an abundance of restaurants, hotels and retail
- 14 minutes to Fort Lauderdale-Hollywood International Airport and Port Everglades
- Easy access to multiple residential areas and towers